


The Kennedy Center

THE JOHN F. KENNEDY CENTER FOR THE PERFORMING ARTS

The Kennedy Center American College Theater Festival-
XXXIX

sponsored in part by

**Stephen and Christine Schwarzman
The Kennedy Center Corporate Fund
U.S. Department of Education
The National Committee for the Performing Arts
and Dr. and Mrs. Gerald McNichols**

This production is entered in the Kennedy Center American College Theater Festival (KCACTF). The aims of this national theater education program are to identify and promote quality in college-level theater production. To this end, each production entered is eligible for a response by a regional KCACTF representative, and selected students and faculty are invited to participate in KCACTF programs involving scholarships, internships, grants and awards for actors, directors, dramaturgs, playwrights, designers, stage managers and critics at both the regional and national levels.

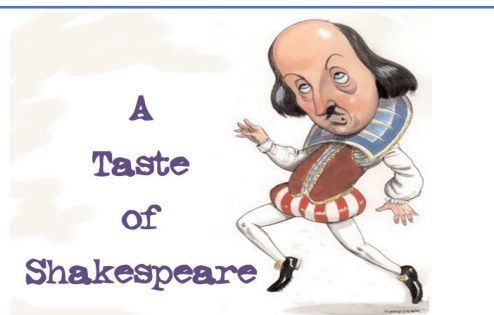
Productions entered on the Participating level are eligible for inclusion at the KCACTF regional festival and can also be considered for invitation to the KCACTF national festival at the John F. Kennedy Center for the Performing Arts in Washington, DC in the spring of 2007.

Last year more than 1,300 productions were entered in the KCACTF involving more than 200,000 students nationwide. By entering this production, our theater department is sharing in the KCACTF goals to recognize, reward, and celebrate the exemplary work produced in college and university theaters across the nation.

COMING IN MARCH

Scenes from
His Greatest Works

March 1-4 - Wells Theatre



CRIMSON MASQUE



$$S_{t+\Delta t} = S_t \left(1 - \frac{\Delta t R_0}{F} I_t \right)$$
$$E_{t+\Delta t} = E_t \left(1 - \frac{\Delta t}{L} \right) + \frac{\Delta t R_0}{F} S_t I_t$$
$$I_{t+\Delta t} = I_t \left(1 - \frac{\Delta t}{F} \right) + \frac{\Delta t}{L} E_t$$
$$R_{t+\Delta t} = R_t + \frac{\Delta t}{F} I_t$$

{Proof}

by David Auburn

Nov. 16-19, 2006 - Wells Theatre

THE WELLS THEATRE

Monmouth College

RESTROOMS are located at the south end of the Lobby. Drinking fountains are located at the north end of the lobby. LATE-COMERS will be seated at the discretion of the ushers. SMOKING is only permitted on the plaza in front of the theatre.

Please be respectful of your neighbors and the actors. Turn off all cell phones and electronic devices. Photography and audio or video recording of the performance is strictly prohibited.

CRIMSON • MASQUE • CELEBRATING • 81 YEARS

MONMOUTH COLLEGE

presents

CRIMSON MASQUE'S PRODUCTION OF

PROOF

BY DAVID AUBURN

Directed by PROF. JANEVE WEST

KATE DROST

MICHAEL HEATON

STEPHANIE HAAS

MICHAEL SEUFER

JAMES SHEPARD, JR.

MARK SHOEMAKER

Scenery by

Doug Rankin

Lighting by

Nick Gorgianis and Kevin Litwin

PROOF is performed by special arrangement with
Dramatists Play Service, Inc.

CREDITS

Director: Janeve West

Scenic Designer: Doug Rankin

Lighting Designers: Nick Gorgianis, Kevin Litwin

Stage Manager: Valerie Key

Assistant Stage Manager: Apryl Wishecoby

Set Construction: Dean St. Ledger, Heidi Benson, Shashwat

Bhattarai, Eric Enge, Sahar Haghghat, Karissa Inman, Hang

Nguyen, CATA 173 class

Light Board Operator: Joe Terwelp

Sound Board Operator: Anastasia (Stacey) Field

Electric Crew: Brett Peurach

Run Crew: Kevin Conrad, Josh Reschke, Raun Singleton, John Wells

Videographers: Taylor Froeliger, Jenny Tunberg

Makeup Crew: Madelyn Ethington, Missy Metz, Janeve West,

Sara Youngs

Lobby Design: Coalition for Women's Awareness; Stephanie Matushek and

Kelsey Graham

Publicity: Valerie Key, Amber Proksch

Box Office: Sara Youngs

Ushers: Dani Connell, Jill Springsteen, KC Fary, Kalpana Kandel, Emily

Bakes, TJ Scruggs, Porsha Bradley

Acknowledgements: Steve Richter for the drum sticks; Dean St. Ledger, the scene shop crew and CATA 173 for set construction

The Wells Theater Lobby

The informational and artistic displays are brought to you by members of the Coalition for Women's Awareness. For more information on CWA, contact Sarah Youngs: syoungs@monm.edu

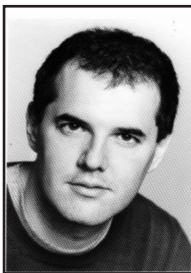
The photographic installation was created by Stephanie Matushek and Kelsey Graham as a part of a Women's Studies course project.

NOTES FROM THE DIRECTOR

The feathers that fall into our lives offer neither proof nor certainty. They are just reminders to stay awake and listen, because the mystery at the heart of life may speak to you at any moment.

--Rachel Naomi Remen

As a new faculty member in the Communication and Theater Arts department, I'm so very proud to introduce myself with this production of David Auburn's *Proof*. All directors maintain a mental list of shows they "wish they had a space to produce," and *Proof* has been high on my list since it hit the boards in 2000. My hope is that you watch this Cinderella story speak to so many levels of humanity. From our very human need to accept and be accepted, to our need to let go, we are all struggling to own ourselves. We are all struggling to listen to the mystery of our own *Proof*.



DAVID AUBURN (Playwright) won the Tony Award and the Pulitzer Prize for *Proof*, which premiered at the Manhattan Theatre Club in May 2000, and opened at Broadway's Walter Kerr Theatre on October 24, 2000. His plays include *Skyscraper* (Greenwich House), *Fifth Planet* (New York Stage and Film), *Miss You* (HBO Comedy Arts Festival) and *The Next Life* (Juilliard School). His short play *What Do You Believe About the Future?* appeared in *Harper's Magazine* and has been adapted for the screen.

Join us for the Coffee House Discussions! November 16

Monmouth Theater is resurrecting an old tradition. This year, after each opening night production, everyone is invited to The Underground for a discussion of the issues, topics, and techniques of the production. Cast, crew and audience alike are invited for coffee, cookies, and great conversation!

CAST OF CHARACTERS

Catherine.....Kate Drost
 Robert.....Michael Heaton
 Claire.....Stephanie Haas
 Hal.....Michael Seufert
 Artistic Company.....James Shepard, Jr.
 Mark Shoemaker

Director.....Janeve West
 Stage Manager.....Valerie Key
 Assistant Stage Manager.....Apryl Wishecoby

Progression of Scenes

Act I	Scene i	A September Night in Chicago
	Scene ii	The next morning
	Scene iii	That night
	Scene iv	The next morning

10-minute Intermission

Act II	Scene i	A September Afternoon, four years earlier than the events in Act I
	Scene ii	Morning, an instant after the end of Act I.
	Scene iii	The next day.
	Scene iv	Winter, three and a half years earlier
	Scene v	The present, a week after the events of scene three

This play contains adult language and situations and may not be suitable for children under the age of 13.

WHO'S WHO IN THE CAST



KATE DROST (Catherine) is a freshman majoring in Communication and Theater Arts from Naperville, IL. Kate is a member of Crimson Masque, Alpha Xi Delta, and was last seen in the Monmouth College production of *A Streetcar Named Desire*. Kate has also done some directing for Naperville High School. After

graduation she'd like to continue her work in the theater, live life, and find out what lies ahead.

It's not theater unless... "you step inside, get lost in the story, and become a part of the show."

ANASTASIA (STACEY) FIELD (Sound Board Operator)

is a freshmen majoring in Communication and Theater Arts and Spanish from Chicago. As a member of Crimson Masque she was also a part of the tech crew in the Monmouth College production of *A Streetcar Named Desire*. She is also a part of Alpha Xi Delta, and would like to continue working in theater after graduation.



It's not theater unless... "you get taken into the magic."



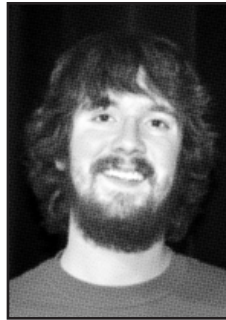
STEPHANIE HAAS (Clair) is a senior majoring in International Business with a Political Science minor. From Geneva, IL, Stephanie is a member of Crimson Masque, Pi Beta Phi, and the Golf Team. She was last seen in the Monmouth College production of *Gint* as Sally Vicks. Another favorite performance was in *A Midsummer Night's Dream* in St.

Charles, IL. After graduation she'd like to continue her education in order to become a professor, though she'd rather move to Paris, learn to speak Norwegian and open her own bookstore. She'd like to thank Professor West, "it has been an honor, Kate Drost, I am SO proud, and Mike Seufert, I will always remember to listen. "I carry your heart, I carry it in my heart."

It's not theater unless... "it shares a secret."

MICHAEL HEATON (Robert)

is a senior majoring in Biology at Monmouth College. Transferring to Monmouth before his sophomore year, Michael first attended Spoon River College near his hometown of Canton, IL. As a member of Crimson Masque he was last seen in this theater in *A Streetcar Named Desire*. He was also seen in *The Importance of Being Earnest* and *Play On!*. His future plans are to attend medical school and someday practice medicine.



It's not theater unless.... "you're doing what you never thought you would."



VALERIE KEY (Stage Manager) is a junior majoring in Communication and Theater Arts and Religious Studies with a Business minor. As a member of Crimson Masque, she is from Glen Ellyn, IL and was last seen in the Monmouth College production of *The Trojan Women*. After graduation she'd like to continue working in youth theater and drama min-

istry, as well as community theater and theater management.

It's not theater unless... "you become a part of the theater family and build the relationships between the people who put the show together and the audience members."



MICHAEL SEUFERT (Hal)

is a senior from Lansing, IL, majoring in English Literature. He is also the editor of the *Coil*, and a member of Sigma Tau Delta. He was also seen in *The Chalky White Substance* at Monmouth College and has held the role of Curly in *Oklahoma!* at Thornton Fractional

South High School. After graduation he will spend two years serving in the Peace Corps before attending law school or perhaps persuing a graduate degree in English Literature.

It's not theater unless... "you, as the audience, enjoy yourself as thoroughly and fully as we on the stage are enjoying ourselves. I sincerely hope you are. Because it's not theater unless it's fun."

JAMES A. SHEPARD, JR. (Artistic Company)

is a freshman majoring in Psychology at Monmouth College. As a member of Crimson Masque, he was last seen in this theater in *A Streetcar Named Desire*. You can also find him as a part of the Zeta Beta Tau fraternity, the Improv Club, or as a part of Listen Up! One of his favorite roles was as the Constable in *Fiddler on the Roof* at Morgan Park Academy in Chicago. His future plans are to attend graduate school in order to open his own private practice in Clinical Therapy.



It's not theater unless... "you totally immerse yourself in your work and the experience and have fun."

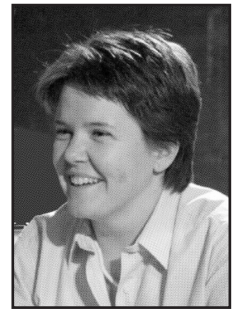


MARK SHOEMAKER (Artistic Company) is a sophomore majoring in math with a physics minor. He was last seen in the production of *The Red House Mystery* at Monmouth High. His future plans are to attend graduate school and become an engineer.

It's not theater unless... "you are having fun and showing more of yourself."

JANEVE WEST (Director)

is a new professor at Monmouth College but not new to the world of directing. Her credits include multiple world premiere productions at The Omaha Theater Company as well as a wide array of academic, community and youth productions. Some of her directing credits include: *Beauty and the Beast*, *Our Town*, *The Taming of the Shrew* and *The Baby Dance*. Janeve has her MFA from Texas Tech University.



APRYL WISHECOBY (Assistant Stage Manager)

is a sophomore majoring in Communication and Theater Arts from Berwyn, IL. Apryl is a member of the Monmouth Women's Basketball Team. Her last theatrical performance was as a

part of the dancing chorus of *Singin' in the Rain*, at Morton West High School. Her future plans are to become a motivational speaker, or go into broadcasting.

It's not theater unless... "you have the freedom and willingness to express yourself."