

---

---

## CREDITS

Director Janeve West  
Scenic Designer: Gregory Malak  
Lighting Designer: Doug Rankin  
Costume Designer: Pat Andresen  
Scenic Artist/Property Designer: Doug Rankin  
Puppet Designer: Doug Rankin  
Stage Manager: Jason Magafas  
Dramaturg: Kevin Litwin  
Property Mistress: Amye Bean  
Costume Crew: Pat Andresen, Kristin Bickett, Ashley Trueblood  
Set Construction: Dean St. Ledger, Heidi Benson, Alissa Diffenderfer, Eric Enge,  
Sahar Haghighat, Karissa Inman, Hang Nguyen, Kenny Weitzmon, CATA 173 class  
Light Board Operator: Jessica Holbrook  
Sound Board Operator: Megan Morgan  
Electric Crew: Stephanie Matushek  
Run Crew: Will Dowling, Lauren Thomas  
Videographer: Jeff Denny, Ashley Sullivan  
Makeup Crew: Madelyn Ethington, Missy Metz  
Lobby Design: Andrea Ceja  
Publicity: Valerie Key, Amber Proksch  
Box Office: Valerie Key, Amber Proksch, Bill Wallace  
Poster and Program Design: Doug Rankin  
Ushers: Valerie Key, Leanna Wilson, Inna Lonchyna, Natalie Pistole, Jennifer Tunberg, Nicole Wasilewski, Andrew McLaren, Leigh Anne Lane, Megan McGuinness  
Special Thanks: Pat Andresen, Brick House Antiques, Dean St. Ledger

**Monmouth College is a proud member of the Illinois Theatre Association**

**COMING IN MAY**

**STUDENT DIRECTED  
ONE ACTS**

May 3 & 4 - WITS Theatre  
basement of  
Haldemen-Thiessen Science Building



I find in human nature a terrible uniformity, in human relationships an irrepressible force, shared by everyone and no one. The individual, just foam on the wave, greatness mere chance, the rule of genius a puppet-play, a laughable struggle with an iron law.

~Georg Buchner

Humor is reason gone mad.

~Groucho Marx

crimson masque  
presents

George Buchner's

Woyzeck

---

# THE WELLS THEATRE

---

Monmouth College

RESTROOMS are located at the south end of the Lobby. Drinking fountains are located at the north end of the lobby. LATE-COMERS will be seated at the discretion of the ushers. SMOKING is only permitted on the plaza in front of the theatre.

Please be respectful of your neighbors and the actors. Turn off all cell phones and electronic devices. Photography and audio or video recording of the performance is strictly prohibited. Please be considerate and keep feet off of seating.

---

CRIMSON

MASQUE

CELEBRATING

81 YEARS

---

MONMOUTH COLLEGE  
presents

CRIMSON MASQUE'S PRODUCTION OF

## WOYZECK

BY GEORGE BUCHNER

Directed by JANEVE WEST

Scenery by Gregory Malak

Lighting by Doug Rankin

Costumes by Pat Andresen

---

## CAST OF CHARACTERS

Woycezk.....Gregory Malak  
Marie.....Stephanie Haas  
Andres.....Stacy Field  
The Captain.....John Wellls  
The Doctor.....Kelsey Cole  
The Drum Major.....James Shepard

**There will be one 10-minute intermission**

## THE PLAYWRIGHT

Georg Büchner was born on October 17, 1813. He studied natural science in Strasbourg from 1831 to 1833 and continued his studies at the University of Giessen, where he assumed a leading role in underground political activity. He was obsessed with overthrowing the autocratic governments of German states, including that of his own Duchy of Hesse-Darmstadt.

In 1836, Büchner received a doctorate from the University of Zurich on the strength of his dissertation *The Nervous System of the Barbel*. At this time, he also began work on *Woyzeck*. The trial and subsequent execution of Johann Christian Woyzeck was the basis for this play. Johann Woyzeck was beheaded in Leipzig in 1824 for the slaying of his mistress. Prior to his execution, Woyzeck was assessed by a Dr. Clarus to determine whether he could be considered responsible for his actions. Clarus concluded that Woyzeck was "of sound mind [and that] any aberrations were due to his physical constitution and moral degeneration." Büchner continued to write until he contracted typhus and died on February 19, 1837; he was 23.

His work on the play was incomplete at the time of his death and the still existing manuscripts consist of several incomplete drafts. After his death the manuscripts went to his brother Ludwig, who kept them but made no attempt to investigate them.

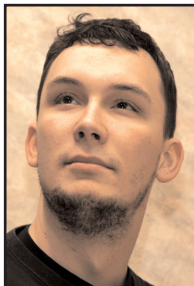
The *Woyzeck* manuscripts went unpublished and unread until the 1870s, when Karl Emil Franzos recovered them from Ludwig and published his version of the play. Franzos faced a very difficult task in the interpretation of the manuscripts. Since the words had faded badly, he found it necessary to chemically treat the paper. This "solution" made work more difficult for future investigators. This blurring of the ink, combined with the fact that Büchner's handwriting was very small, actually caused Franzos to read the name of the main character as *Wozzeck*. (This translation went onto become the basis of Alban Berg's opera by the same title.)

The most problematic aspect of the manuscripts was their incompleteness. For his translation, Franzos used scenes from the different manuscripts and ordered them according to his own assumptions of what the playwright originally intended. The work went on to be variously and posthumously "finished" by a variety of authors, editors and translators, and the scenes often reordered by directors. *Woyzeck* has become one of the most performed and influential plays in the German theatre repertory.

## THE MUSIC

Some of the music you will hear tonight comes from the Tom Waits' album, *Blood Money*. Waits and his wife Kathleen Brennan wrote these songs for an avant-garde production of *Woyzeck* directed by Robert Wilson. Wilson's production premiered in November, 2000 at the Betty Nansen Theater in Copenhagen and went on to win Denmark's version of the Tony for Best Musical.

**JOHN WELLS (The Captain)** is a sophomore philosophy and gender studies major from Freeport, IL. He is a member of Crimson Masque, IFC, ScotSpeak!, and ZBT Fraternity. He was last seen in the MC production of *Hamlet*. His favorite role in the past was Digory in the MC production of *She Stoops to Conquer*. After College John plans to work with youth. He would like to thank his parents Fred and Elle for being there. It's not theater unless... "We grow."



*Town, The Baby Dance, Beauty and the Beast and The Taming of the Shrew.* Her last production at MC was the November 2006 production of *Proof*. Janeve has her MFA in both acting and directing from Texas Tech University.

**MICHAEL "WOZ" WOZNIAK (Charlatan, Medical Student, Soldier)** is a freshman from Stickney, Illinois. He is undecided in his major. Woz is a member of ZBT Fraternity, FYI, the campus improv troupe, *The Courier*, Spiritual Life, and the Boy Scouts of America. He was last seen in the Monmouth College production of *Hamlet* as King Claudius. This role was Woz's favorite past role. After College Woz's plans include having a job that pays the bills and that he loves, most likely working with children, having a wife and kids, a dog named Rover, a house with a white picket fence, and a pickup truck. He would like to thank his family, friends, and all those who have supported him in the past, present and future. "I love you all." It's not theater unless... "Somebody 'breaks a leg' then it's hilarious."



**JANEVE WEST (Director)** is finishing her first year as a professor at Monmouth College. Her credits include multiple world premiere productions a The Omaha Theater Company as well as a wide array of academic, community and youth productions. Some of her directing credits include: *Our*



## CLIPBOARD (CONTINUED)

of personal emotions, often anguished, that would cut through the inhibiting and repressive bourgeois society that they perceived around them. It is an off shoot of impressionism that intends to show the inner psychological reality of its characters.

Theater of Cruelty. A theory of playwright Antonin Artaud, which he put into practice with his own theater company in the 1930's. He believed that actors and audiences should be "victims burned at the stake, signaling through the flames." In general, this means the presentation of plays that strive to shock the audience into an awareness of the ruthlessness and savagery of existence by showing characters of extremely unconventional behavior.

Stock Characters. Those who represent particular personality types or characteristics of human behavior. Stock characters appear throughout the history of theatre and are immediately recognizable.

\*\*\*Terms from the Columbia Dictionary of Modern Literary and cultural Criticism\*\*\*

**Join us for the Coffee House Discussions! April 18**  
 Monmouth Theater is resurrecting an old tradition. This year, after each opening night production, everyone is invited to The Underground (the basement of Grier Dormitory) for a discussion of the issues, topics, and techniques of the production. Cast, crew and audience alike are invited for coffee, cookies, and great conversation!

## CAST OF CHARACTERS (CONTINUED)

Margaret / Kathy / Innkeeper.....Lindsay Brogan  
 Charlatan / Medical Student / Soldier.....Mike Wozniak  
 Sergeant/Policeman/Monkey.....Mike Diamond  
 Wife of Charlatan / Medical Student / Soldier.....Kayt Sophia Griffith  
 Idiot / Grandmother / Horse.....Melissa Metz  
 Organ Grinder / Child / Medical Student / Soldier /  
 2nd Apprentice.....Karissa Inman  
 1st Apprentice / Horse Medical Student / Soldier / Pawnbroker....Heidi Benson

## FROM THE CLIPBOARD OF THE DIRECTOR

Realism. An attempt in theatre to represent everyday life and people as they are or appear to be, through careful attention to detail in motivation of characters, costuming, setting and dialog.

The production you are about to see is not realism.

It is not intended to sweep you into the action or emotion of the characters or situations. It is not intended to provide a "nice evening of entertainment." What you are about to see is an example of didactic theater. Theater practitioner Augusto Boal might call it, "theater as a weapon" or "theater as a tool for social change." Director and playwright Bertolt Brecht might call it "theater for the discovery of new truths." Either way, it is not intended for pure entertainment, though I hope it is entertaining. I happen to think elements of this production are hilarious. I hope you can laugh with me, though it might be maddening to do so.

Many of the directorial and performance conventions used in tonight's production were influenced by Brecht and intended to "alienate" the audience in the hope that distance might allow for learning. I hope you find the direct address to the audience, use of song, repetition of action, immediate reveal of the final moment, actors stepping in and out of character in full view, and many other "Brechtian" elements of this production as funny, heart-wrenching, though-provoking, uncomfortable, warm, honest, and painful as they are intended to be. We are at this academic institution to learn, after all. The topic of this lesson is madness, and how even the best of us can be driven to it. So, as The Doctor says, "Observe!"

A few useful terms...

Didactic. An intention to preach or to teach; plays that have as their primary intention the teaching of a lesson.

Theater of the Absurd. A convention defined by contemporary critic Martin Esslin as "striving to express its sense of the senselessness of the human condition and the inadequacy of the rational approach by the open abandonment of rational devices." Plays in the absurdist tradition attempt to show the irrational and illogical aspects of life through absurd characters, dialogue, and situations.

Expressionism. Centered in Germany, expressionism was an early 20th Century avant-guard movement in art, architecture, literature, theater, music and film. Expressionist artists were concerned with the projection

*continued inside back cover*





**STEPHANIE M. HAAS (MARIE)** is a senior international business major/political science minor from Geneva, Illinois. She is a member of Pi Beta Phi, Alpha Psi Omega, and the golf team. Stephanie was last seen in the MC production of Shakespeare's *Hamlet* as Ophelia. Stephanie's favorite past role was Claire in *Proof*. After college Stephanie plans to move to Chicago and spend her summer at an internship. She would like to thank

her fellow students, professors, friends and family, for their camaraderie and guidance. It's not theater unless... "you learn something new."

**KARISSA "RISSA" INMAN (Organ Grinder, Child, Medical Student, Soldier, 2nd Apprentice)**

is a freshman from Cedar Rapids, IA majoring in English education with minors in CATA and classics. Rissa is a member of PRISM, FYI the campus improv club, and Women's Glee Club. Her favorite role was Ellen in the Marion High School production of *Voices from the High School*. After college, Rissa plans to teach English and theater at Metro High School. She would like to thank her parents for always supporting her 110% and the faculty and staff of Metro High School; without either she would never be at Monmouth or on the stage. It's not theater unless... "you are creative, fully become the character, and love what you are doing!"



**JASON MAGAFAS (Stage Manager)** is a freshman from Orland Park, IL majoring in CATA with a theatre emphasis. He is a member of Crimson Masque, ScotSpeak!, President of Graham Hall Council, Anime Club, and FYI, the campus Improv Troupe. Jason last worked on the MC Production of *Holiday Mishaps* as props master

and curtain manager. A favorite past role was in the Carl Sandburg Production of *Into the Woods* where he was assistant stage manager. After college Jason plans to become a pyrotechnician and work with fire. He would like to thank his grandparents for being there for him, his mother for raising him perfectly and the cast for an absolutely hilarious rehearsal. It's not theater unless... "I get hurt or something blows up."

**GREGORY MALAK (Woycezk)**

is a senior from Lockport, IL majoring in CATA with an emphasis in theater and a religious studies minor. He is a member of Crimson Masque, Monmouth College Jazz Band, and Quad City Irish Rugby. He was last seen in the MC Production of *A Streetcar Named Desire* as Stanley. Gregory's favorite past role Gint in the MC production of that name. After college Gregory plans to have a backstage job building sets. He would like to thank his family and friends for supporting him over the years and to his mentors for all their life lessons. It's not theater unless... "You tell a story and have fun with the show."

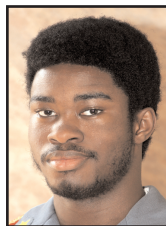


**MELISSA METZ (Idiot, Grandmother, Horse)**

is a sophomore from Chicago majoring in English and CATA with a minor in secondary education. She is a member of Crimson Masque, Scots Ambassadors, Orientation Leaders, the Makeup and Costume Crew, Pi Beta Phi sorority, and Big Brother Big Sister. Melissa was last seen in the MC production of *Hamlet* as Queen Gertrude. Her past favorite role was Sandy in the Mt. Carmel High School production of *One Flew Over the Cuckoo's Nest*. After College Melissa would like to teach theater and English and eventually go to grad school. She would like to thank her friends for coming to all her shows and running lines with her, and Professor West for putting in all her hard work and time and the cast for being such a great group to work with. It's not theater unless... "it's a lot of hard work and even more fun!"

**JAMES A. SHEPARD, JR. (The Drum Major)**

is a psychology major from Chicago. He is a member of Crimson Masque, PRISM, ScotSpeak, FYI the campus improv troupe, and the ZBT Fraternity. James was last seen in the MC production of *Holiday Mishaps*. His favorite past role was the Constable in *Fiddler on the Roof*. After college James plans to open a Psychology Clinic of his own. James would like to thank his parents and everyone who worked on Woycezk. It's not Theater unless... "you are close to being fired."



**WHO'S WHO IN THE CAST AND CREW**

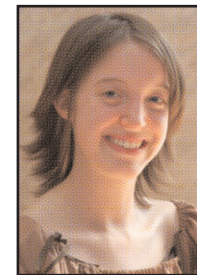


**HEIDI BENSON (1st Apprentice, Horse, Medical Student, Soldier, Pawnbroker)**

is a junior elementary ed major from Morrison, Illinois. Heidi is a member of Crimson Masque, secretary of Circle K, a Scot Ambassador, and on Fulton Hall Council. She was last seen in the MC production of *A Christmas Carol*. This was her favorite past role. Heidi's future plans include to study abroad and become a teacher. She would like to thank you for coming to see the production. It's not theater unless... "magic is being made on the stage."

**LINDSAY BROGAN (Margaret, Kathy, Innkeeper)**

is a sophomore psychology and communication arts major from Des Plaines, Illinois. Lindsay is a member of Crimson Masque, CEA, and the Vice President of La Raza. She was last seen in the Monmouth College Production of *Hamlet* as the Messenger. Her favorite role in the past was Lisa in the one act *Private Eyes*. Lindsay plans to have a career in theatre and go to grad school for speech pathology. She would like to thank her mother for raising her brother and herself, and for helping her be the person she is. Lindsay would also like to thank her godmother Terri, her grandparents Peter and Marge, and friends who have helped her along the way. It's not theater unless... "You have fun, learn something, and always remember the cast and such fun we had in rehearsals."



**KELSEY COLE (The Doctor)**

is a sophomore English major and minor in CATA and Spanish from Grayslake, Illinois. She is a member of Crimson Masque, president of Students for Environmental Awareness, co-President of Listen Up!, and FYI the campus improv troupe. Kelsey was last seen in the MC production of *Holiday Mishaps* as the PETA representative. After college she plans to live in Chicago, write for environmental campaigns, then become a high school English teacher. She would like to thank her family for their support and India Arie and Will Smith for their inspiration. It's not theater unless... "An inside joke is made every 10 minutes."



**MICHAEL DIAMOND (Sergeant, Policeman, Monkey)**

is from Orland Park, IL. He is a freshman math major with a business minor. Michael is a member of Crimson Masque and ScotSpeak!. He was last seen in the MC production of *Hamlet* as Laertes. His favorite role was the Rabbi in the Carl Sandburg High School production of *Fiddler on the Roof*. After MC he plans on getting into marketing through future summer internships. Mike would like to thank his family, Ashley, and his friends for always being there for him. It's not theater until... "you create the world you live in."



**STACEY FIELD (Andres)**

is a freshman from Chicago majoring in CATA with a theatre emphasis. She is a member of Crimson Masque and Alpha Xi Delta Sorority. She last worked on the MC Production of *Proof* where she was the Stage Manager. After college Stacey plans to further her education and get a successful job in either theatre or music. She would like to thank her fellow cast members for the laughs and sweat that was put into this production, her best friend and sister Kate for without her help, care and support Stacey would not have been in this production or gotten through anything. She would like to also thank her family, friends, and fellow Alpha Xi's. It's not theater unless... "You throw away your suspension of disbelief and join our world of magic, entertainment and teachings."

**KAYT SOPHIA GRIFFITH (Wife of Charlatan, Medical Student, Soldier)**

is a freshman from Woodstock, Illinois. She is a majoring in English, special education, and CATA. Kayt is a member of Crimson Masque, Collegiate Scholars, Relay for Life, Alpha Lambda Delta, and the Kappa Kappa Gamma sorority. She was last seen in the MC production of *Othello*. Her favorite past role was Patty Simcox in the Woodstock High School production of *Grease*. Kayt's future plans include being happy. It's not theater unless... "you have imperfection."

