

**MONMOUTH COLLEGE
DEPARTMENT OF THEATRE**

presents

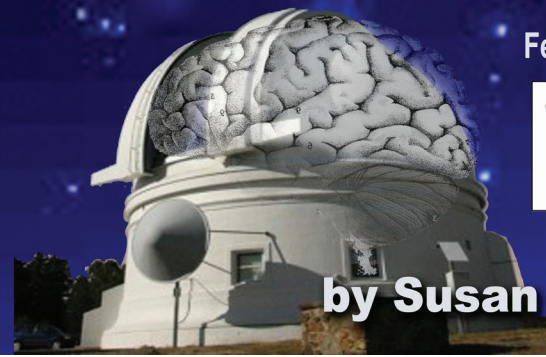
**NGTHI
NTHIG
GIHTN
IHGNT
NIGHT
SKY**

Alpha Psi Omega
National Theatre Honor Society
Presents:
Annual Spring Showcase

Saturday, April 2nd, 2016
Admission: \$1
In the Wells Thater

Featuring:
Monmouth College Improv
The Sassy Lassies
The Scotsmen
Faculty & more!

February 25-28, 2016



by **Susan Yankowitz**

Night Sky

By: Susan Yankowitz

Directed by:

Ellen Johnson and Jill Turley

February 25-28, 2016

Wells Theater

Monmouth College

Characters & Setting

Set in modern day: New York City, NY

Anna: An astronomer in her 40s: strong, intelligent and intense; moves from extreme self-confidence to extreme vulnerability in the course of the play.

Daniel: Anna's live-in lover, younger than she by 5 years; opera singer, baritone: warm, outgoing, playful, loving, and sensual.

Jennifer: Anna's daughter, 16; bright, sarcastic, self-dramatizing and tender-hearted. A very contemporary teenager.

Bill: Anna's astronomy colleague, middle-aged; socially clumsy but imaginative and charismatic in the classroom.

Speech Therapist: Articulate, patient, emphatic, and skilled in active listening.

Aphasic Patient: Representative of Anna's aphasia, is always one step ahead

General Information

* denotes member of Alpha Psi Omega,
National Theatre Honor Society.

Please silence all electronics

Restrooms and drinking fountains are located in the lobby

There will be a 15-minute intermission.

Photography and recording of any kind is prohibited.

Produced by special arrangements with SAMUEL FRENCH,
INC.

Originally produced in New York City by the Women's Project
And Productions, Inc.

Julia Miles, Artistic Director

A Note from our Directors

We would like to begin by thanking all of the hard working individuals who have made Night Sky possible, as we all know how many countless hours we all spend pulling things together. We are very thankful for the faculty, staff, designers, cast, crew, and our peers who have worked so patiently and brilliantly with us. This has been the most wonderful learning experience that we are so grateful to have had.

In a time filled with uncertainty, we are faced with the question of what is truly important to us, what keeps us grounded. We were brought together to co-direct this show as two completely different people with different situations, ideas, and backgrounds. We bring different experiences that affect our thinking and bring different struggles that affect our emotions. Yet, when it comes to Night Sky, we come to the same conclusion: connections are everywhere, in every thought, action, and deed.

Circling around the central metaphor of the play, the direct connection between the dark matter of the universe and the dark matter of the brain, Night Sky follows Anna who is faced with a tremendous change in her life, leaving her in her own uncertainty to pick up the pieces and redefine who she is. The loss of the stars, her words, is catastrophic, yet her lifelong passion for the cosmos, her connection to it, keeps her grounded to the ever changing world around her. While Anna rebuilds the personal relationships around her, Bill, her colleague, defines her in terms of science and the galaxy: her words bursting apart like the Big Bang, being stuck in a third realm such as the famous Schrödinger's cat, and being lost in darkness but still continuing to exist, much like a black hole. References such as these are riddled throughout the play, helping us to truly see how we are connected to the stars and to each other.

We dedicate our hard work on this show to those we love most, those who keep us grounded: our families, the ones that we have lost and the ones who keep us going. You are our stars.

With all our love,

Ellen and Jill

Design Team

Directors..... Ellen Johnson* & Jill Turley
 Faculty Advisor..... Dr. Emily Rollie
 Stage Manager..... Toni Ward
 Scenic Design..... Amanda Bowman & Adam Duffield
 Lighting Design..... Johnny Williams III*
 Sound Design..... Katie Yelm
 Costume and Makeup Design..... Liz Johnson*
 Properties..... Adam Duffield
 Dramaturg..... Ellen Johnson*
 Assistant Dramaturgs..... Haylee Gustafson* & Leslie Appel
 Director of Theatre, Technical Advisor..... Doug Rankin
 Scene Shop Foreman..... Leo Szaltis
 Costume Shop Foreman..... Raymond Gabica
 Post-Baccalaureate..... Nick Sargis
 Box Office/Publicity..... Ellen Johnson*, Haylee Gustafson*,
 Leslie Appel

Run Crew

Light Board Operator..... Carlin Reinig
 Star Machine Operator..... Jamie Smith
 Sound Board Operator..... Sean Paulsgrove
 Costume/Makeup Crew..... Corrinne Crawford, Kallie DiTusa, Nhung
 Vu, Priscilla Tun, Tyler Altfillisch
 Stage Crew..... Chase Dietrich, Carson Perrero, Kyle Schultz,
 Jesus Valenciana
 Camera Operator..... Emma Pierson Wentzel

Special Thanks

Tim Stiles	President Wyatt & Lobie Stone
Dr. Vanessa Campagna	Louis Badang
OSF Galesburg	THEA 173 Students
ARTD-230G Students	Jeannie Weber
First Choice Medical Medical Equipment, Inc.	
Work Study Students	Scholarship Students

The Cast

Anna..... Becca Mills
 Daniel..... Zachary Russell Lampkin
 Jennifer..... Alexi Licata
 Bill..... Billy Savage
 Speech Therapist..... Natalie Palmer Stortoni*
 Aphasic Patient..... Miles Rose
 Ensemble..... Haley Willits
 Ensemble..... Abdul Rahman Al-Kabbani
 Ensemble..... Dareann (D) Pettis-Weber

The Kennedy Center



The Kennedy Center American College Theater Festival 49®, part of the Rubenstein Arts Access Program, is generously funded by David and Alice Rubenstein. Special thanks to The Harold and Mimi Steinberg Charitable Trust for supporting the John F. Kennedy Center of the Performing Arts' Kennedy Center American College Theater Festival.

Additional support is provided by The Honorable Stuart Bernstein and Wilma E. Bernstein; the Blanche and

Irving Laurie Foundation; the Dr. Gerald and Paula McNichols Foundation; Beatrice and Anthony Welters and the AnBryce Foundation.

Kennedy Center education and related artistic programming is made possible through the generosity of the National Committee for the Performing Arts and the President's Advisory Committee on the Arts.

This production is entered in the Kennedy Center American College Theater Festival (KCACTF). The aims of this national theater education program are to identify and promote quality in college-level theater production. To this end, each production entered is eligible for a response by a regional KCACTF representative, and selected students and faculty are invited to participate in KCACTF programs involving scholarships, internships, grants and awards for actors, directors, dramaturgs, playwrights, designers, stagemanagers and critics at both the regional and national levels.

Productions entered on the Participating level are eligible for invitation to the KCACTF regional festival and may also be considered for national awards recognizing outstanding achievement in production, design, direction and performance. Last year more than 1,300 productions were entered in the KCACTF involving more than 200,000 students nationwide. By entering this production, our theater department is sharing in the KCACTF goals to recognize, reward, and celebrate the exemplary work produced in college and university theaters across the nation.



Becca Mills
 Becca Mills is a sophomore Sociology and Anthropology major with a concentration in Human Services and a minor in Spanish. She is in the Chorale, the Winds Ensemble, Crimson Masque, Sassy Lassies, and Alpha Lambda Delta.



Zachary Russell Lampkin
 Zachary Lampkin is a sophomore Music major. He is involved in Chamber Choir, Chorale, Improv, and The Scotsmen.



Alexi Licata
 Alexi Licata is a Sociology and Anthropology major with a concentration in Human Services. She is also a Theatre and Communication minor and is involved in Theatre and Alpha Lambda Delta.



Billy Savage
 William Savage is a freshman with a major in Political Science and a minor in Theatre. He is involved in Spectrum, Improv, Anime Club, and Table Top.



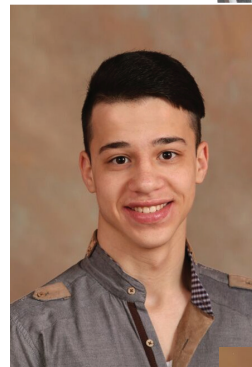
Natalie Palmer Stortoni*
 Natalie Stortoni is a senior English, Theatre, and Education triple major. She is in Alpha Psi Omega, Sigma Tau Delta, Crimson Masque, and is involved with the Writing Center.



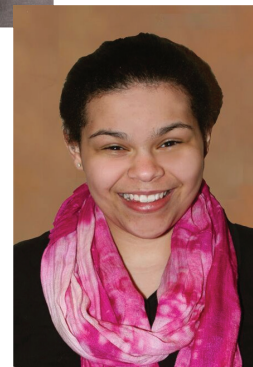
Miles Rose
 Miles Rose is a freshman with a major in Music and Theater. He is involved in Chamber Choir, Chorale, Zeta Beta Tau, and Jazz Band.



Haley Willits
 Haley Willits is a sophomore English major with a Theatre minor. She is involved in Pipe Band, Sigma Tau Delta, Alpha Lambda Delta and is also an MJUR editor, orientation leader, and Stockdale manager.



AbdulRahman Al-Kabbani
 AbdulRahmen Al-Kabbani is a Sophomore Communication major with a Media and Theatre minor. He is also in The Scotsmen.



Dareann (D) Pettis-Weber
 D is a 7th grader at ICS here in Monmouth. She is our ASL interpreter and was involved in "Tribes" last fall. D is in choir and loves to help the Monmouth College Theatre Department. Her dream is to become an actress.