

# Coming in November



Monmouth College  
Department of Theatre  
*presents*



# T RIBES

by Nina Raine

*when actions speak louder than words*

October 1-4, 2015



# Tribes

by Nina Raines

directed by

**Johnny Williams III\***

## Characters

CHRISTOPHER, *Billy's father. Fifties/sixties*

BETH, *Billy's mother, Fifties/sixties*

RUTH, *Billy's sister. Twenties. The middle child. A year or two older than Billy*

DANIEL, *Billy's brother. The oldest child. Twenties. A year or two older than Ruth*

BILLY, *Twenties. The youngest child. Deaf*

SYLVIA, *Twenties. Going deaf*

## Setting

Present day

TRIBES is presented by special arrangement with  
Dramatists Play Service, Inc., New York.

*Tribes* contains graphic language and adult situations. Runtime is about two hours. There will be one 15-minute intermission. Refreshments are available in the lobby. Photography or recording is strictly prohibited.

## Director's Note

*Tribes* by Nina Raines is not only an important show for the deaf community, it is significantly important to me. *Tribes* deals with the intricacies and the complications of the relationship between the deaf and hearing communities. In our society we build and create tribes whether the tribes are in our families or based on our ideologies. There is strength and support by identifying within a tribe; however, the outsiders lack the support necessary to grow.

When I first saw *Tribes*, I connected to a variety of the characters within the show. I was very personally connected to the character Daniel, because the relationship Billy and Daniel share reminds me of my relationship with my brother. I am dedicating this production to my brother, J.D., because of his strength and dedication to himself, even when support was absent.

This is a play about a family and I hope that you will all be able to connect to the show on the same emotional level. Enjoy Monmouth College's production of *Tribes*.

Much  ,

Johnny Williams III

# Very Special Thanks!

Doug Rankin, Vanessa Campagna, Christopher Fasano, Emily Rol-  
lie, Nick Sargis, The Students of THEA 173, President Wyatt and  
Lobie Stone, Work Study Students, Zachary Brand, Megan Horack,  
Kyle Fitzgerald, Milan Audiology Consultants. Western Illinois

The Kennedy Center



The Kennedy Center American College Theater Festival™

XLIX

Presented and Produced by

The John F. Kennedy Center for the Performing Arts

*Supported in Part by*

The U.S. Department of Education

Dr. and Mrs. Gerald McNichols

The Laura Pels International Foundation

The Kennedy Center Corporate Fund

The National Committee for the Performing Arts.

This production is entered in the Kennedy Center American College Theater Festival (KCACTF). The aims of this national theater education program are to identify and promote quality in college-level theater production. To this end, each production entered is eligible for a response by a regional KCACTF representative, and selected students and faculty are invited to participate in KCACTF programs involving scholarships, internships, grants and awards for actors, playwrights, designers, stage managers and critics at both the regional and national levels.

Productions entered on the Participating level are eligible for inclusion at the KCACTF regional festival and can also be considered for invitation to the KCACTF national festival at the John F. Kennedy Center for the Performing Arts in Washington, DC in the spring of 2016

Last year more than 1,400 productions were entered in the KCACTF involving more than 200,000 students nationwide. By entering this production, our theater department is sharing in the KCACTF goals to recognize, reward, and celebrate the exemplary work produced in college and university theaters across the nation.

# The Cast

<i>Billy</i>	Adam Duffield
<i>Sylvia</i>	Sarah Schmitt*
<i>Christopher</i>	Jack Godlewski
<i>Beth</i>	Amanda Bowman
<i>Daniel</i>	Zach Platt
<i>Ruth</i>	Becca Mills





## Adam Duffield

Adam Duffield is a senior Theatre major at Monmouth College. His home-town is Fairview, Illinois.

He was involved in theatre all through his high school career.

Adam has been involved in many shows throughout his years at Monmouth. Some of those many include, *The Good Doctor*, *The*

*Awesome '80s Prom*, and *Stop Kiss*. While Adam isn't in shows, he is involved in other things around campus such as Crimson Masque, President of the Improv Group on campus and a head resident.



## Sarah Schmitt\*

Sarah Schmitt hails from Maren-go, Illinois. She is an Elementary Education major with a Spanish minor. Portraying Sylvia has given Sarah the opportunity to discuss her own hearing loss with the Monmouth community. She'd like to thank her Mom, Dad, and

D for their endless patience and support in during this process.

# Letter from the Dramaturg

Winner of the Drama Desk Award and New York Drama Critics Circle Award, *Tribes* gives the audience the perspective of how difficult it is to be a deaf person and how it is going deaf. It lets people see how families not only accept the deaf but accept the ones they love and are willing to do anything for them.

Theatre and pop culture started to shine a light on the deaf and hard-of-hearing community over time. Many people know of the play from 1957, *The Miracle Worker*, by William Gibson. The play is about the famous Helen Keller, who was both deaf and blind, and her teacher, Anne Sullivan, who taught her sign language. Also, *Children of a Lesser God* (1980) by Mark Medoff was a play that shows a relationship between a hearing and a deaf person. In 1986, it was made into a movie starring deaf actress Marlee Matlin who won an Academy Award for best actress – the first and only time the award has been won by a deaf woman.

More recently, Los Angeles-based Deaf West's production of the musical *Spring Awakening* received rave reviews, and was so popular that it transferred to Broadway for a limited run this September. What is unique about Deaf West's production is that deaf and hearing actors perform side-by-side; the deaf actors sign the words as hearing actors sing them. It is the first Broadway show where deaf actors are able to play roles that are normally played by hearing actors.

Deaf culture has also become more commonly portrayed on television. While series such as *CSI* and *The West Wing* featured small roles (mostly played by Marlee Matlin) it was not until the show, *Switched at Birth* (2011-) where the deaf community was shown in greater depth and detail. *Switched at Birth* shows the difficulties of deafness in today's society and they shot scenes entirely in American Sign Language.

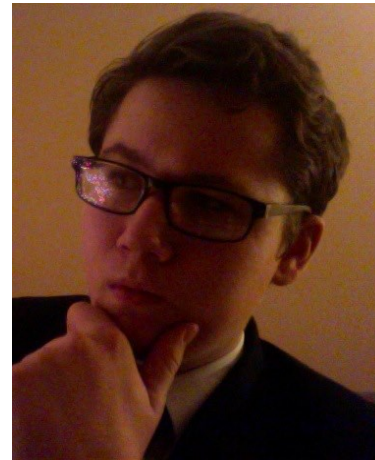
*Tribes* joins these iconic plays, films, and television shows to showcase and increase awareness of deaf culture. Playwrights like Nina Raine are helping people like me who live with hearing loss see ourselves on stage and helping audiences around the world know more about what it is like to be deaf.

-Haylee Gustafson

### Bibliography:

- Isherwood, Charles. "Review: 'Spring Awakening' by Deaf West Theater Brings a New Sensation to Broadway". The New York Times. 27 Sept. 2015. Print.
- Gans, Andrew. "Award-Winning Family Drama Tribes Plays the Guthrie Beginning Oct. 5". Playbill. 05 Oct 2013. Print.

The Crew	Sound Board Operator.....	Joe Ward
	Light Board Operator.....	Erik Ruud
	Spotlight Operators.....	Steven Andris Ashley Castellanos
	Props.....	Ben Markinson Ashley Castellanos



### Jack Godlewski

Jack Godlewski is a freshman at Monmouth College studying broadcast journalism and graphic design. In his free time, Jack writes, paints, and spends time with his friends and family. This is his first time putting on a dramatic performance and

is pleased to bring you *Tribes*. Enjoy the show!

## General Information

\* denotes member of Alpha Psi Omega,

National Theatre Honor Society

Please silence cell phones

Restrooms and drinking fountains are located in the lobby

**No photography** of any kind is allowed

**No recording** of any kind is allowed



### Amanda Bowman

Amanda Bowman is from Monmouth, Illinois. She's currently a junior Classics/Public Relations double major and the President of Crimson Masque, as well as a member of Alpha Xi Delta. Being a part of *Tribes* has been one of the best experiences thus far

in her college career.



### Becca Mills

Becca Mills is a sophomore Sociology/Anthropology/ Human Service major and Spanish minor and loves to be involved in various musical and theatre groups on campus. To play a part in such a powerful show is such an honor. Shout out to the cast, crew and the

especially amazing director without whom this show would be nothing.



### Zach Platt

Zach Platt is an International Studies major from Harvard, Illinois. He has a passion for learning about things that are normally taken for granted in life. *Tribes* has really helped him reflect upon his own life and how he has taken things for granted as someone

who is not fully deaf. It has been a great learning experience, and it will continue to be long after the final show is through.

## The Production Team

Stage Manager	Jill Turley
Scenic Design	Adam Duffield
Set Construction	Leo Szaltis Doug Rankin Phat Lien Trenh Nick Mainz Brian Pfau Amanda Grissom Noah Postin
Lighting Design	Tara Oakes
Assistant Lighting Design	Sean Paulsgrove
Lighting Advisor	Nick Sargis
Sound Design	Sujith Santhosh
Projection Design	Daniel B. Chapman Douglas E. Menke
Property Design	Natalie Stortoni*
Costume Design	Johnny Williams III*
Costume Construction	Ray Gabica
Dramaturg	Haylee Gustafson*
Makeup Designer	Curtis Galloway*
Publicity/Box Office	Haylee Gustafson* Leslie Appel Mackenzie Notestein
ASL Interpreter.....	Dareann Pettis Jeannie Weber